



Temperature Compensated Crystal Oscillator

TCXO 1025

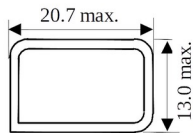
Features

- Standard DIL-14 Package
- Wide Frequency Range
- Custom Options available
- RoHS Compliant

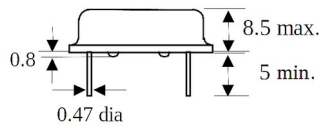
Mechanical Specifications

Outline

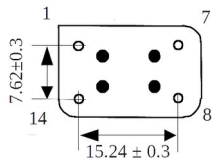
Top View



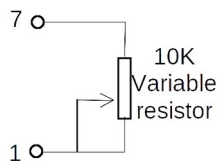
Front View



Bottom View



Option R



External 2 pin variable resistor

▲ All dimensions are in mm. Tolerance is ± 0.1 mm, unless otherwise specified. Sharp edges indicates Pin No. 1.

Pin Configuration:

Pin	Option N & I	Option V
1	No Connection	Control Voltage
7	Ground	Ground
8	Output	Output
14	DC input	DC input


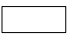
Specifications	Variant			Option Codes
	H	T	S	
Frequency Range: 1 MHz ~ 160 MHz 8 MHz ~ 100 MHz	■	□	■	
Output Drive: 15 pF HCMOS / TTL Sine Wave Other	■	■	■	Specify
Output Levels: Logic '0' = +0.5 V (max.), '1' = +4.0 V (min.) Logic '0' = +0.4 V (max.), '1' = +2.4 V (min.) + 0 dBm (min.) into 50 Ω	■	■	■	
Rise/ Fall time: 10 ns (max.)	■	■		
Waveform Symmetry: 40:60 (max.) @ 2.5 V 40:60 (max.) @ 1.4 V	■	■		
Frequency Accuracy: ± 1 ppm (max.) at 25°C ± 2 °C	■	■	■	
Temperature Stability: Select from Table 1	□	□	□	Specify
Operating Temperature Range (OTR): Select from Table 1	□	□	□	Specify
Supply Voltage, V_{dd}: +3.3 V ($\pm 5\%$) +5.0 V ($\pm 5\%$) Others	□	□	□	3 5
Supply Current: 20 mA (max.) (<20 MHz) 30 mA (max.) (20 ~ 50 MHz) 50 mA (max.) (>50 MHz)	■	■	■	
Supply Voltage Stability: ± 0.2 ppm (max.)	■	■	■	
Load Stability: ± 0.2 ppm (max.)	■	■	■	
Frequency Adjustment Option: ± 5 ppm (min.) by External Control Voltage (0.5 V _{dd} \pm 0.5 V _{dd}) ± 3 ppm (min.) by Internal Trimmer ± 5 ppm (min.) by external 2 pin Variable Resistor None	■	■	■	V I R N
Aging: ± 1 ppm (max.) for First Year	■	■	■	
Storage Temperature Range: -55°C to +125°C	■	■	■	

■ Standard, □ Optional – please specify required code(s) when ordering.

Temperature Compensated Crystal Oscillator

Table 1

OTR Codes	Stability Codes		X	Y	Z	P
	Temperature Stability		± 0.5 ppm	± 1 ppm	± 1.5 ppm	± 2 ppm
A	Operating Temperature Range	0°C to +50°C				
B		0°C to +60°C				
F		0°C to +70°C				
D		-10°C to +60°C				
E		-10°C to +70°C				
C		-20°C to +70°C				
G		-30°C to +80°C				
H		-30°C to +85°C				
I		-40°C to +85°C				

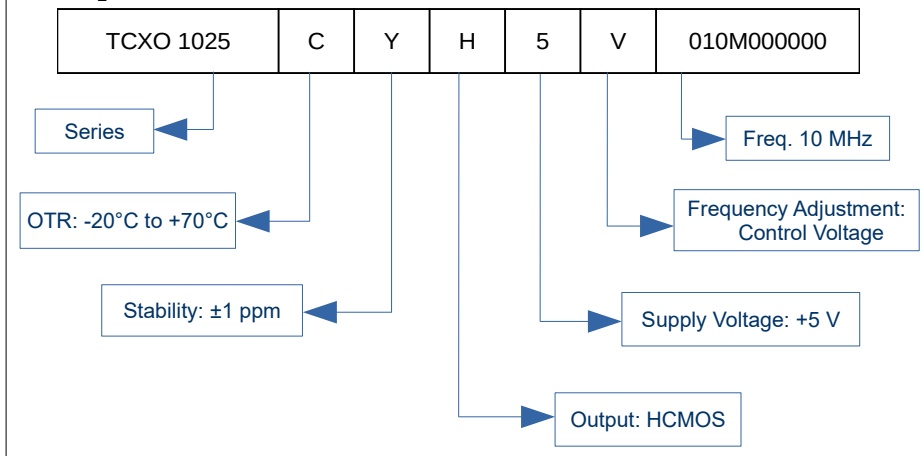
 Denotes Available  Denotes not Available

Typical SSB Phase Noise @ 10 MHz

@ 10 Hz	- 80 dBc/ Hz
@ 100 Hz	-100 dBc/ Hz
@ 1 KHz	-130 dBc/ Hz
@ 10 KHz	-135 dBc/ Hz

Ordering Information

Example



Specifications subject to change without notice

Rev. Date: 29th March 2021

Note: Not all combination of options are available. Other specifications may be available upon request.

Doc. No.: AE/DS/P.O/001

ISSUE 00

REVISION 01

Page 2 of 2

Andhra Electronics Pvt. Ltd.

Plot No.: 34 & 35, IDA,
Kakinada-533 005
Andhra Pradesh, India
URL: www.andhraelec.com

Phone: +91 884 234 2203
Fax: +91 884 234 1145
e-mail: info@andhraelec.com